



MASSEY FERGUSON

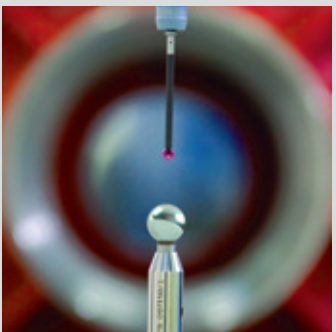
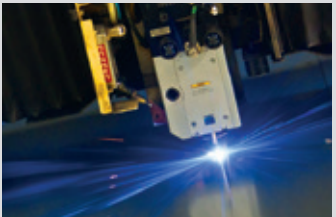
176 HP

MF ACTIVA

7340



FROM MASSEY FERGUSON



Breganze, Italy

Harvesting Centre of Excellence for Massey Ferguson, Home of precision engineering and manufacture.

This is where each machine comes to life, where every tiny piece comes together to produce machines of incredible capabilities. The Breganze combine factory lies within the beautiful province of Vicenza in Italy. Like the various Massey Ferguson production plants around the world, the Breganze factory has an extensive and proud agricultural manufacturing history.

The Breganze factory manufactures mid-range and IDEAL combine harvesters for Massey Ferguson, for worldwide distribution. This modern facility covers 25 hectares and employs over 600 people. Produced using the latest technology, combine harvesters at the Breganze plant are built to the highest specification and quality by a very dedicated team.

Today Breganze produces combines with a range of threshing technologies. All combines are complemented by a range of FreeFlow, PowerFlow or corn flow headers, available in different sizes, that are designed to maximise harvesting speed and efficiency while minimising crop loss.

MF ACTIVA 7340

Unchallenged versatility

The **MF ACTIVA 7340** combine harvester is built to the highest standards. A flexible and dependable machine, it is gentle on both grain and straw. Coupled with an extremely efficient **4 cylinder engine** that will minimise harvesting costs to its owner.

A specifically designed cab offers operators a quiet, comfortable environment, with ergonomically positioned controls and panoramic visibility.

MF ACTIVA 7340	176 Hp	5 Walker	5200 litre grain tank
Header size	4-6 metres		

Contents

- 02 Quality manufacturing
- 03 The cab
- 04 Threshing and separation
- 05 Straw quality
- 06 Your engine and support
- 08 Specifications



The Elegance cab

Make life easier



Main control dashboard

The Elegance cab is designed to give the operator an perfect productive working environment. It brings together excellent convenience with perfect comfort, even after many hours at work.

The controls are ergonomically positioned making the combine operation simple and easy. Features include: air conditioning, heating, adjustable mirrors and excellent visibility.*

Height control indicator, shaft speed monitor and hectare counter are part of the standard offering.

The ergonomic **multi-function lever** gives the operator full control in comfort.

- 01 Reel lift/lower
- 02 Reel fore/aft
- 03 Cutting header up/down
- 04 Reel slower
- 05 Reel faster
- 06 Unloader in
- 07 Unloader out



*manual on base, electrical as optional via APD

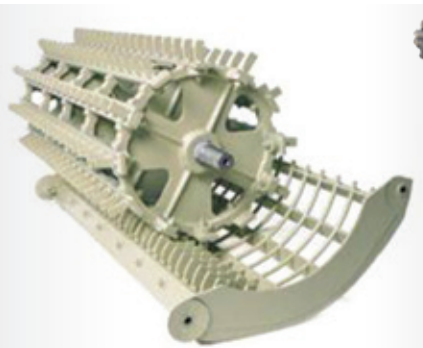
Threshing quality at the heart of the combine

The threshing components have been optimized to suit all crops. A robust cylinder **600mm by 1340mm** wide, with eight rasp bars threshes gently and positively. It can handle a wide range of crops from **grass seed** through **small grain** to **maize**.

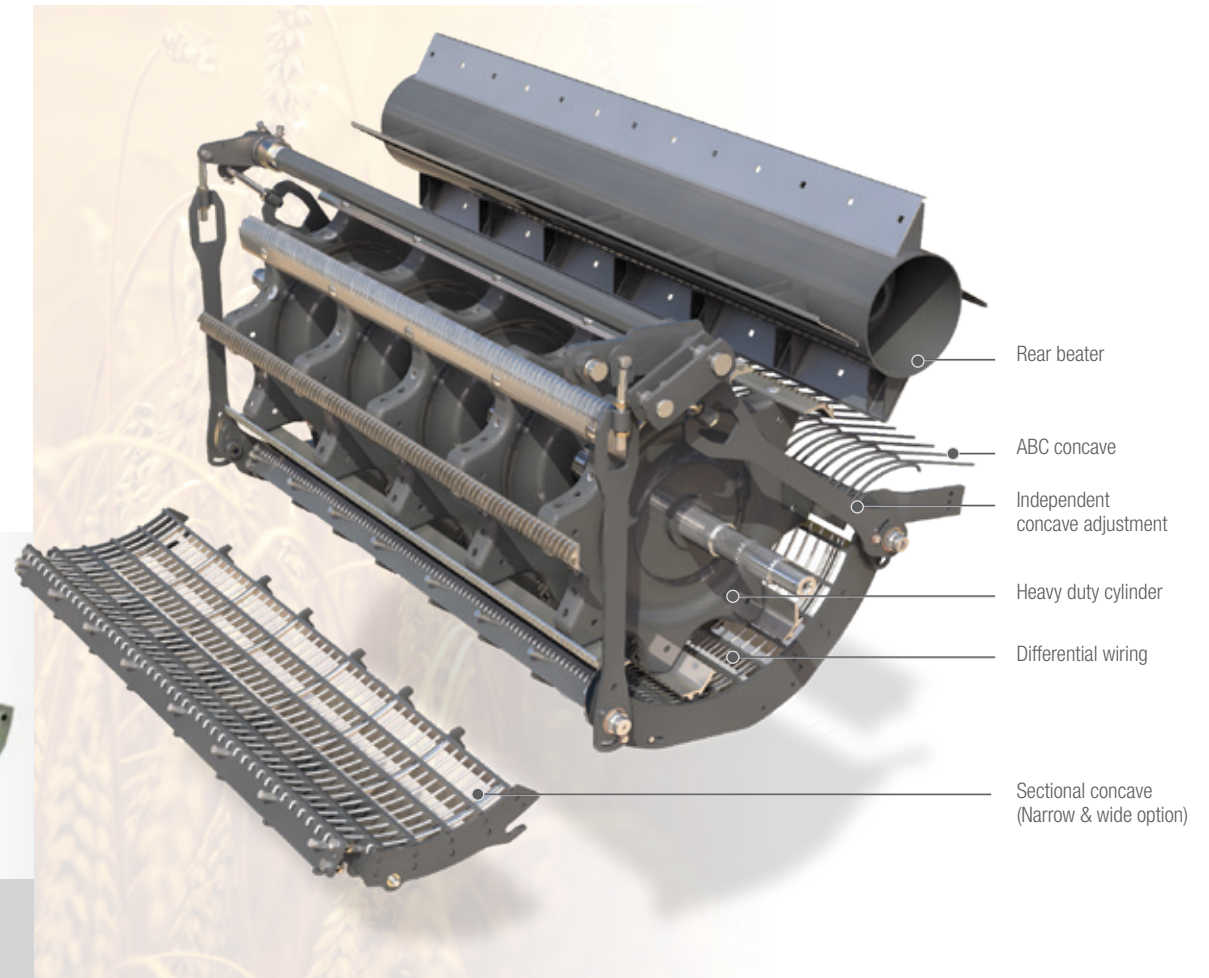
The concave can be uniquely adjusted back and front from the cab for varying crop conditions. It has differential wire spacing, which offers excellent threshing in the first part coupled with maximum separation in the second part.

The ABC concave is fitted to the rear of the main concave which extends the separation capacity. This can be adjusted in three positions to get the best performance, increasing the separation area by 20%.

A **sectional concave** option allows a quick change from small to large seeded crops.

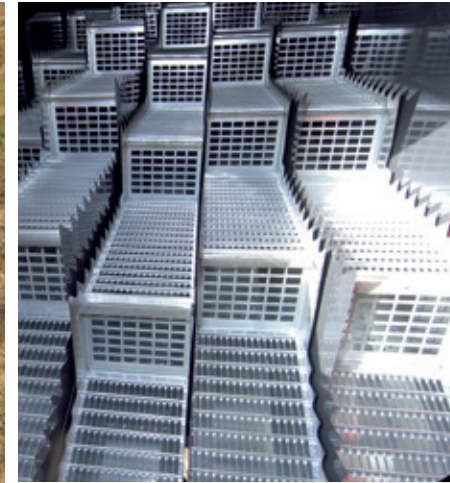


Rice cylinder and concave option



Straw quality

High quality straw is a certainty from the gentle threshing system and provides an even swath that is perfect for baling either round, small or large square bales. Standard swath gates allow you to set the required width to produce a perfect size. Risers can be easily fitted for damp conditions. Conserving the straw in this way makes the fuel consumption figures even lower to further reduce harvesting costs.



High separation performance

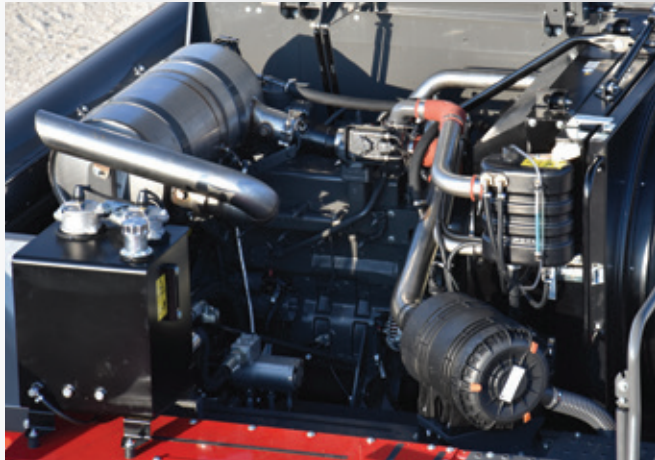
The long straw walkers feature four steps with 'active walls'. The 21 cm high, vertical sections of the walker steps are made up of permeable grids. These are the highest for any conventional combine. The front steps of the straw walkers are reinforced for maize.



High capacity sieve design

The grain pan with an opposed action agitates the material from the concave making two separate layers of grain and chaff to be separated by the powerful volumetric fan. The fully adjustable sieves are specifically designed with tags which give a very clean sample whatever the crop. To remove them for cleaning is very simple, requiring a minimum of effort.

How much importance do you place on your combine engine?



We can promise you that your AGCO POWER **4 cylinder** 4.9 litre engine has been designed to match the latest emission regulations, using third generation SCR technology meaning that it actually has one of the most advanced designs on the market. It's better for the environment and running costs will be one of the lowest in the business.

Also it's important how it performs – we can tell you that fuelling is designed to give a flat torque curve, one that a combine needs to give a constant delivery under load no matter what the conditions. This coupled with the low friction drives we use, will give you **incredibly low fuel consumption per tonne** and **excellent fuel economy**.

Note: A low regulation fuel version without AdBlue® is also available for non-compliant markets.

MFservices

Total Support from MF Services

Massey Ferguson and its Distributors and Dealers are always prepared and ready to put in the extra mile to support your purchase.



Agriculture can be a tough business, that's why we make sure that you can get support whenever you need it and at crucial times of the year. Our Dealers are committed to finding the right product for you and then supporting you with the best service, parts provision and backup. You'll be part of a dedicated family of highly skilled specialists who make it their business to give you genuine, top quality service support.

We understand farming and are aware of the challenges each individual faces, therefore our Dealers can help you to plan for a successful future. Ask your Dealer about our finance plans, which can include leasing, hire purchase, contract hire and loan facilities.

You can also secure your assets with an **MFCare** Service and Extended Warranty Plan*; a complete package aimed at providing total care for your combine including routine maintenance, repair cover and full AGCO backed warranty.

***MFCare** Service and Extended Warranty Plan may not be available or may be market dependant. Please contact your Massey Ferguson Dealer to check availability in your area. Terms and conditions apply.

Specifications

	MF ACTIVA 7340
Cutting table with standard Terra control*	
Cutting width (m)	4.2m -6m
Cutting frequency (strokes/min)	1,220
Crop Elevator with standard reverser	
Chains (n°)	3
Drum	
Diameter (mm)	600
Threshing housing width (mm)	1346
Rasp bars (n°)	8
Concave	
Bars (n°)	12
Wrapping angle (degrees)	106 degrees
ABC threshing module	
Bars (n°)	2
Position (n°)	3
Straw-walkers	
Straw-walkers/steps (n°)	5/4
Separation surface (m²)	5.73
Sieves	
Sieving area (m²)	4.67
Tailing return	drum
Ventilation	
Fan	volumetric
Speed (rpm)	350 - 1050

* sensors are included only on the header ● Standard ○ Optional



Freeflow table with crop lifters

	MF ACTIVA 7340
Grain tank	
Capacity (litres)	5200
Unloading speed (Litres/sec)	72
Unloading tube height (m)	4.20
Unloading tube length (m)	4
Quiet cab with Air Conditioning	
Air conditioning system	●
Heating	●
On board computer	●
Engine	
Type	AGCO POWER 4 cylinder 4.9 litre
Power rating hp (kW)	176hp (129KW)
Fuel system	Electronic injection
Fuel tank (litres)	450 (AdBlue® 80 litres)
LRC version (non-compliant markets)	○ (Without AdBlue®)
Transmission	
Type	Hydrostatic
Gearbox (n°)	3
Main brakes	Disc type
Tyres	
Front tyres	620/75 R30
Rear tyres	400/70-20

Optional Accessories list

Chaff spreader

Maize kit

Small seeds kit

Additional work lights

Wider option tyres front and rear

Straw chopper

Tracks

Electrical deflectors for straw chopper

Performance monitor

Crop lifters

Cooler box

Electric sieves

Grain loss monitor

Every effort has been made to ensure that the information contained in this publication is as accurate and current as possible. However, inaccuracies, errors or omissions may occur and details of the specifications may be changed at any time without notice. Therefore, all specifications should be confirmed with your Massey Ferguson Dealer or Distributor prior to any purchase.



MASSEY FERGUSON

A world of experience. Working with you.



Web: www.MasseyFerguson.com

Facebook: www.Facebook.com/MasseyFergusonGlobal

Twitter: [Twitter.com/MF_EAME](https://twitter.com/MF_EAME)

Instagram: [Instagram.com/MasseyFergusonGlobal](https://www.instagram.com/MasseyFergusonGlobal)

YouTube: www.YouTube.com/MasseyFergusonGlobal

Blog: Blog.MasseyFerguson.com



MASSEY FERGUSON® is a worldwide brand of AGCO.
© AGCO SAS. 2019/7 | A-A-16749 | English



Responsible forest management

